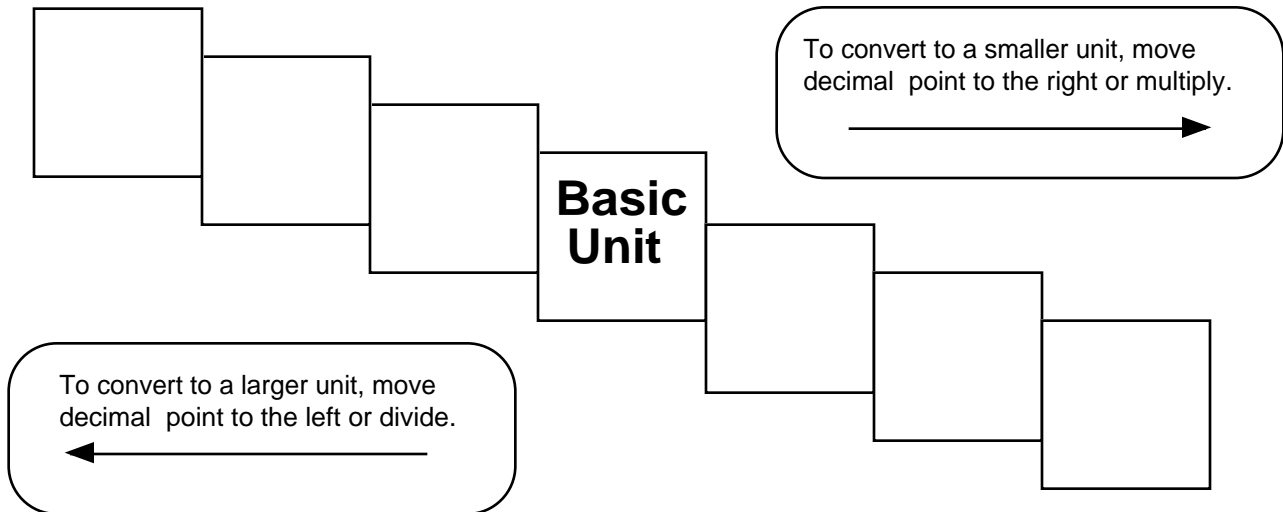


Metric Mania

Conversion Practice

Name _____



Try these conversions, using the ladder method.

$1000 \text{ mg} = \underline{\hspace{2cm}} \text{ g}$

$1 \text{ L} = \underline{\hspace{2cm}} \text{ mL}$

$160 \text{ cm} = \underline{\hspace{2cm}} \text{ mm}$

$14 \text{ km} = \underline{\hspace{2cm}} \text{ m}$

$109 \text{ g} = \underline{\hspace{2cm}} \text{ kg}$

$250 \text{ m} = \underline{\hspace{2cm}} \text{ km}$

Compare using $<$, $>$, or $=$.

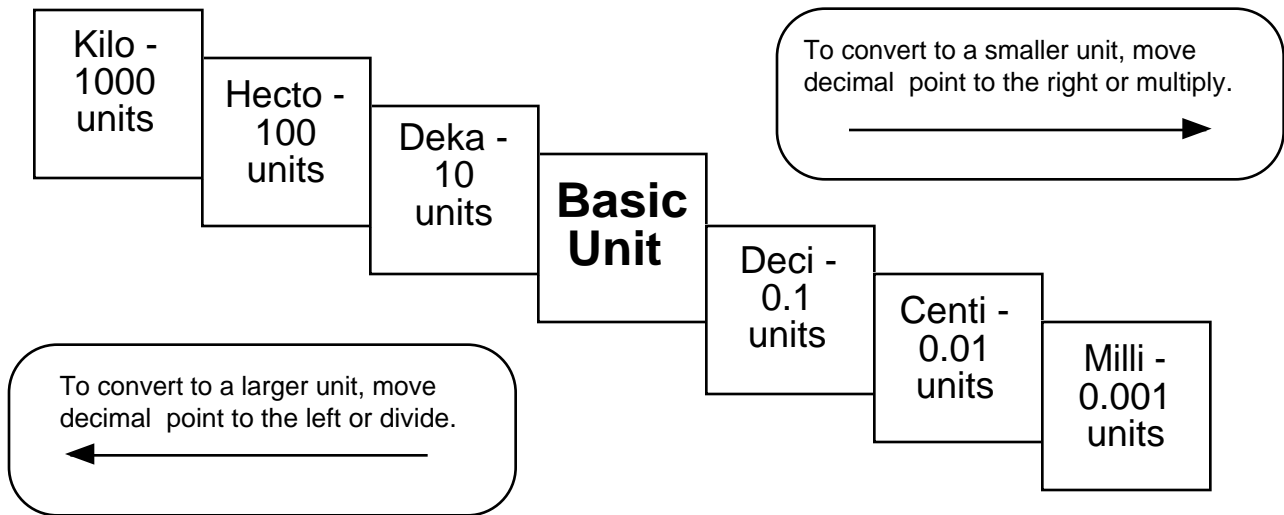
$56 \text{ cm} \bigcirc 6 \text{ m}$

$7 \text{ g} \bigcirc 698 \text{ mg}$

Metric Mania

Conversion Practice

Overhead Copy



Try these conversions, using the ladder method.

$1000 \text{ mg} = \underline{\hspace{2cm}} \text{ g}$

$1 \text{ L} = \underline{\hspace{2cm}} \text{ mL}$

$160 \text{ cm} = \underline{\hspace{2cm}} \text{ mm}$

$14 \text{ km} = \underline{\hspace{2cm}} \text{ m}$

$109 \text{ g} = \underline{\hspace{2cm}} \text{ kg}$

$250 \text{ m} = \underline{\hspace{2cm}} \text{ km}$

Compare using $<$, $>$, or $=$.

$56 \text{ cm} \bigcirc 6 \text{ m}$

$7 \text{ g} \bigcirc 698 \text{ mg}$

Conversion Challenge

Write the correct abbreviation for each metric unit.

- | | | |
|-------------------|---------------------|---------------------|
| 1) Kilogram _____ | 4) Milliliter _____ | 7) Kilometer _____ |
| 2) Meter _____ | 5) Millimeter _____ | 8) Centimeter _____ |
| 3) Gram _____ | 6) Liter _____ | 9) Milligram _____ |

Try these conversions, using the ladder method.

- | | | |
|----------------------|----------------------|-----------------------|
| 1) 2000 mg = _____ g | 6) 5 L = _____ mL | 11) 16 cm = _____ mm |
| 2) 104 km = _____ m | 7) 198 g = _____ kg | 12) 2500 m = _____ km |
| 3) 480 cm = _____ m | 8) 75 mL = _____ L | 13) 65 g = _____ mg |
| 4) 5.6 kg = _____ g | 9) 50 cm = _____ m | 14) 6.3 cm = _____ mm |
| 5) 8 mm = _____ cm | 10) 5.6 m = _____ cm | 15) 120 mg = _____ g |

Compare using <, >, or =.

- | | | |
|----------------------|------------------|----------------------|
| 16) 63 cm ○ 6 m | 17) 5 g ○ 508 mg | 18) 1,500 mL ○ 1.5 L |
| 19) 536 cm ○ 53.6 dm | 20) 43 mg ○ 5 g | 21) 3.6 m ○ 36 cm |

Metric Mania Answer Keys

Conversion Practice

NOTE: See overhead copy for the stairstep boxes.

$$1000 \text{ mg} = 1 \text{ g}$$

$$160 \text{ cm} = 1600 \text{ mm}$$

$$109 \text{ g} = 0.109 \text{ kg}$$

$$1 \text{ l} = 1000 \text{ ml}$$

$$14 \text{ km} = 14000 \text{ m}$$

$$250 \text{ m} = .250 \text{ km}$$

$$56 \text{ cm} < 6 \text{ m}$$

$$7 \text{ g} > 698 \text{ mg}$$

Conversion Challenge

1. kg

2. m

3. g

4. ml

5. mm

6. l

7. km

8. cm

9. mg

1. 2 g

2. 104000 m

3. 4.8 m

4. 5600 g

5. .8 cm

6. 5000 ml

7. 0.198 kg

8. 0.075 l

9. 0.5 m

10. 560 cm

11. 160 mm

12. 2.5 km

13. 65000 mg

14. 63 mm

15. 0.12 g

16. <

17. >

18. =

19. =

20. <

21. >